

Warranty terms and conditions

1. "KUNERT" grants a warranty for the pram you purchased for 24 months from the date of purchase, provided that the pram is used for its intended purpose.
2. Any and all claims for defects shall be submitted to the retailer.
3. Warranty repairs shall be performed by the manufacturer or the service provider as indicated by the retailer.
4. Physical defects found in the warranty period shall be removed within 14 days from the date of delivery of the pram to the facility by the retailer.
5. The warranty period shall be extended by the time of repair.
6. Damages not attributable to the manufacturer may be removed at the user's expense.
7. The method of repair shall be determined by the warranty provider.
8. The warranty excludes:
 - normal wear and tear of the specific elements,
 - damages caused by improper use or storage,
 - mechanical and thermal damage,
 - discolouration of the upholstery fabric,
 - repairs performed by unauthorised persons,
9. The claim letter should provide circumstances in which damage to the pram occurred.

NOTE:

A precondition for the claim to be accepted is to submit the warranty card with the date of the sale and a claim application.

WARRANTY CARD

No	Date of repair commencement	Date of repair completion	Warranty extended until	Type of repair and signature
1.				

.....

Date of purchase and retailer stamp Buyer's signature

The warranty for the consumer product sold does not limit or withhold the buyer's rights arising from non-conformity of the product with the agreement.

KUNERT

Professional

P.P.H.U. KUNERT Marcin Kunert
42-125 Kamyk Borowianka, ul. Tartakowa 127
Tel. 662565934

e-mail: serwis@kunert-wozki.pl

www.kunert-wozki.pl

PN EN 1888:2012

Operating manual for pram MILA

NOTE: FOR THE SAFETY OF YOUR CHILD, PLEASE READ ALL INSTRUCTIONS CONTAINED IN THESE OPERATING MANUAL CAREFULLY BEFORE USING THE PRAM.

Important – Keep this manual for future reference.

WARNING This product is not suitable for running or skating

- The pram is designed for children from 0 to 36 months of age and a body weight of 15 kg.
- The safety of the child may be at risk if the instructions are not followed.
- If any of the pram components is damaged, you must not use the pram.
- The pram can hold one child only.

The pram may be used only and exclusively by the number of children indicated and not more than that.

- The maximum load of the basket is 3 kg. - The maximum load of the bag is 1.5 kg.

WARNING Always use the resistant system

WARNING Never leave your child unattended

WARNING Before using the pram, make sure that all locking mechanisms are engaged.

WARNING Use the safety harness when the child begins to sit up on his/her own.

WARNING The product is not suitable for jogging or roller skating.

WARNING To avoid injuries, make sure your child is at a distance when folding or unfolding the pram.

WARNING Do not let your child play with this product

WARNING Check if the devices for fitting the carrycot, the seat or the car seat are correctly attached before use.

WARNING A child that can sit up on his/her own, turn over and move on his/her arms and knees should be fastened in a carrycot harness.

The pram should never be left unsupervised on a sloping surface when a child is inside, even when the parking device is activated.

WARNING The parking device should be activated when the child is put in and taken out of the pram.

EN



1



2



3



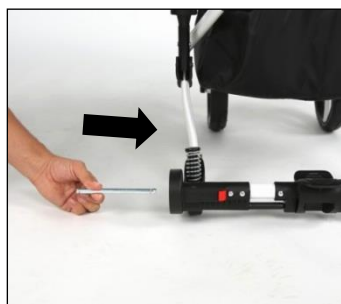
4



5



6



9



10



11



12



13



14

SAFETY BAR

The pram seat is equipped with a safety bar. It is mounted on the pram by sliding the hooks into the correct slots on both sides of the seat, pressing at the same time red buttons in order to lock the safety bar. When mounted, release the buttons (fig. 20). Always check whether the safety bar is mounted correctly.

In order to remove the safety bar, press the red buttons to release hooks on both sides of the pram and then pull the safety bar up.

SAFETY HARNESS IN THE PRAM

The pram is equipped with a 5-point safety harness. After placing the child on the pram seat, push the buckles of the harness into the lock (fig. 21) and adjust the length of the straps by pulling them tight. **WARNING** Always use the safety harness buckling system.

To unbuckle the harness, press on the sides of the buckle and pull them apart.

WARNING Use the safety harness when your child starts to sit up on his/her own.

PRAM COVER

The seat is equipped with a cover which can be mounted using a zip and by fastening the snaps to the ones on both sides of the hood (fig. 22).

SHOPPING BASKET

The pram comes with a shopping basket. To attach the basket on the chassis of the pram, fasten it to the lower part of the pram using the zip.

RAIN COVER

The pram is equipped with a rain cover which is pulled over it. The rain cover has ventilation outlets at the level of the child's face.

MOUNTING THE CAR SEAT

The pram also comes with a car seat option for children. To mount the car seat, the car seat adapters need to be mounted first to the chassis. To mount the adapters on the chassis, click them into designated slots (two on each side of the pram) (fig. 23).

WARNING! Before using the car seat, ensure that the car seat adapters are correctly mounted. Both adapters should be locked.

After correct mounting of the car seat adapters on the chassis, you can move on to mounting the car seat. To mount the car seat, you need to fit its buckles into matching plastic handles on the adapters (fig. 24). **WARNING** Before using the pram, make sure that all locking mechanisms are engaged.

This pram does not substitute a cradle or a crib. If your child needs to sleep, it is recommended to put him/her in an appropriate carrycot, cradle or crib.

The car seat comes with a hood and a cover which are mounted with snaps.

The car seat is equipped with an adjustable handle. The handle is adjusted by pressing the red buttons on both sides of the car seat and moving the handle into a desired position (fig. 25).

To remove the car seat, you need to pull the levers on both sides of the car seat (fig. 26).

To dismantle the adapters, press the buttons on the both sides of the pram chassis.

HANDLE HEIGHT ADJUSTMENT

To adjust the handle height, you need to press the buttons on both sides of the handle and then adjust the height while simultaneously pressing the buttons (fig. 27).

MOUNTING AND REMOVAL OF THE CARRYCOT

To mount the carrycot on the chassis, click it into designated slots (one on each side of the pram) (figs 10, 11) until the hooks are locked. The hooks are locked automatically.

Warning The carrycot should always be mounted rear-facing (so that the child faces the person pushing the pram). **WARNING** Before using the pram, make sure that all locking mechanisms are engaged (fig. 11).

To take the carrycot off, press the adapter buttons on both sides of the pram (fig. 11) and lift the carrycot up using the handle.

WARNING! Do not fold the pram with the carrycot in it.

Warning A child that can sit up on his/her own, turn over and move on his/her arms and knees should be fastened in a carrycot harness.

WARNING Do not use a mattress thicker than 10 mm.

WARNING: Use the safety harness when your child starts to sit up on his/her own.

CARRYCOT HOOD

The carrycot has a permanently attached hood. You can adjust the hood as necessary by pressing buttons on both sides of the hood and positioning the hood as necessary (fig. 12). The hood has a handle which is used to carry the carrycot (fig. 13).

CARRYCOT COVER

The carrycot is equipped with a cover which can be mounted by attaching the snaps of the cover to the respective snaps on both sides of the hood (fig. 14).

MOUNTING AND REMOVAL OF THE PRAM SEAT

To mount the seat on the chassis, click it into designated slots (one on each side of the pram) (fig. 15) until the hooks are locked (fig. 11). The hooks are locked automatically. The stroller seat may be mounted in front-facing and rear-facing positions.

WARNING! Before you use the pram, make sure all blocking devices are activated.

To remove the seat, press the buttons on the both sides of the pram chassis (fig. 11).

WARNING This seat is not suitable for children under 6 months.

PRAM SEAT HOOD

The pram seat is equipped with a protective hood. To mount it, slide its hooks into designated slots on both sides of the pram seat chassis until the hood is locked (fig. 16).

To remove the hood, press the buttons of the hooks on both sides and pull up the hood (fig. 16).

The position of the hood is adjustable.

It can be positioned differently. To adjust the hood position, move it forwards or backwards to achieve the desired result (fig. 17).

If a newborn baby is put in the stroller, it is recommended to set the position of the seat which is to be used from the baby's birth in a position similar to a lying one.

BACKREST ADJUSTMENT

The backrest can be adjusted in 4 positions. To lift the backrest up, you need to pull up the lever from under the back of the seat and at the same time pull up the backrest up until you reach the desired position. Next, release the lever (fig. 18).

To recline the backrest, you need to pull up the metal lever, place it in the desired position and release the lever.

SWIVEL FRONT WHEELS

The pram has front swivel wheels with a lock of the straight-ahead push. In order to lock the wheels, first position them parallel to the rest of the pram and then turn the rim to the right (fig. 29). In order to unlock the front wheels to go in all directions, simply turn the rim to the left.



15



16



17



18



19



20



21



22



23



24



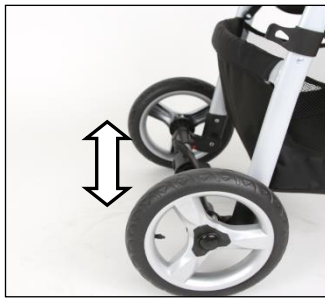
25



26



27



28



29

INSTRUCTIONS FOR USE

FOLDING AND UNFOLDING THE PRAM CHASSIS

To unfold the pram chassis, lay it down flat, push the lock (fig. 1) and pull it up strongly while holding the handle until the locking mechanism will lock into place (fig. 2).

WARNING! Before using the pram, ensure the locking mechanisms are activated, if not, pull them tighter.

The chassis may be folded in two ways (with and without wheels):

- to fold the chassis with the wheels, first lock the front wheels by positioning them perpendicularly to the pram. Then, press the lock button with your thumb (fig. 3) and then simultaneously pull the levers on both sides of the handle (fig. 4).

- to fold the chassis without wheels, take off two front wheels (fig. 5) and rear wheels (fig. 6). Then, press the lock button with your thumb (fig. 3) and simultaneously pull the levers on both sides of the handle (fig. 4).

WARNING! Before folding the pram chassis, remove the carrycot to avoid any difficulties.

PARKING DEVICE

To activate the parking device, you need to step on the lever at the bottom of the pram (fig. 28). The parking device will be released when the lever is lifted.

WARNING! The pram must not be pushed when the parking device is activated.

WARNING! The pram should not be left unsupervised on a sloping surface when a child is inside, even when the parking device is activated.

FOOTREST ADJUSTMENT

The footrest can be adjusted by simultaneously pressing side buttons while putting it in the desired position (fig. 19).

MOUNTING AND REMOVAL OF REAR WHEELS

Before mounting the wheels, first mount the axes in the pram chassis. In order to mount the axes, push the larger end of the axis into the absorber by pressing the red button, and then release the button. Mount the axes on both sides of the pram and check whether fixed properly (fig. 9).

To mount the rear wheels, press the metal button in the central part of the wheel (fig. 6) and then slide the wheel on the axis as far as it will go, release the button and pull back the wheel until you hear a “click” sound.

Always check whether the wheels are mounted correctly. In case the pram wheel comes off when pulled, repeat the wheel mounting procedure until mounted properly.

FASTENING THE HARNESS

In order to fasten the harness, click the ends of the harness in hooks on both sides of the carrycot.

(The harness is not provided with the pram).

GUIDELINES AND WARNINGS

- Before assembling the pram, ensure that all the components are fit to use. If they are damaged, the product should not be used.
- When you fold and unfold the pram, ensure that the child is at a safe distance.
- The parking device must be used every time the pram is stopped.
- While adjusting the pram, you must ensure that no moving parts are directly touching the child.
- Any additional weight on the handle of the pram, the front/back of the seat and/or sides of the pram makes it unstable.
- When going up a curb or any other step, it is important that you lift the front wheels.
- Store the pram in an area inaccessible to the child.

The pram must not be ridden down the stairs.

The pram should only be used with its original parts authorized by the manufacturer.

The chassis of the pram is compatible only with an original carrycot, seat and car seat provided by the manufacturer. Only original components included in the set guarantee full compatibility and proper functioning of the pram.

Every Kunert pram is marked with the company logo for product identification purposes.

Do not use a mattress thicker than 10 mm.

The upholstery of the pram may be cleaned with a soft cloth, using soap or other mild cleaning agents. You can apply oil or grease to the pram's axes, thus protecting it from excessive wear.

Any additional seat should be equipped with a clear compatibility statement with a specific pram.

Accessories not accepted by the manufacturer should not be used.

Only spare parts provided or recommended by the manufacturer/distributor should be used.

The parking device should be active when you put in and take out children for the pram.

The harness attaching hooks are located in the gondola. When mounting the harness, fasten it to the hooks (handles) of the harness and check the correctness of the attachment.

WARNING Use a harness as soon as your child can sit unaided.

WARNING This seat unit is not suitable for children under 6 months.

The maximum wheel pressure is 0,8 BAR

WARNING Ensure that all the locking devices are engaged before use

WARNING To avoid injury ensure that your child is kept away when unfolding and folding this product

WARNING Check that the pram body or seat unit or car seat attachment devices are correctly engaged before use.

This product is suitable for a child who cannot sit up by itself, roll over and cannot push itself up on its hands and knees. Maximum weight of the child: 9 kg

