



MANUAL INSTRUCTION



FRAME PREPARATION



5.



6.



7.



8.



9.



12.



11.



10.



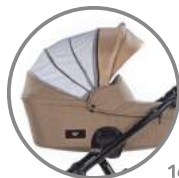
CRADLE



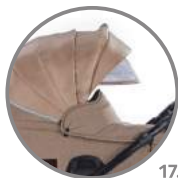
14.



15.



16.



17.



18.



20.



19.



SEAT UNIT



22.



30.



23.



29.



24.



25.



21.



28.



26.



27.



31.

CAR SEAT



32.



33.



34.



35.



36.



DEAR PARENTS!

We would like to express our sincere gratitude for purchase of the stroller AERO TUTIS!

We have created this wonderful stroller in accordance with the EU standards. We are proud to present a solution that will grant exclusive comfort for Your child and ensure practical usage for you. Please read the instruction carefully and learn about all the possibilities provided by Your stroller. This will help to ensure the safety and comfort of Your baby.

We hope that the stroller AERO SPORT will be easy to use for your family and that it will contribute to many pleasant moments experienced by You!

Sincerely,
TUTUTIS JSC

IMPORTANT – Keep these instructions for future reference.

EN 1888:2012

WARNING

- ENSURE THAT ALL THE LOCKING DEVICES ARE ENGAGED BEFORE USE.
- NEVER LEAVE YOUR CHILD UNATTENDED.
- ANY LOAD ATTACHED TO THE HANDLE AND/OR ON THE BACK OF THE BACKREST AND/OR ON SIDES OF THE VEHICLE WILL AFFECT THE STABILITY OF THE VEHICLE.
- THIS PRODUCT IS NOT SUITABLE FOR RUNNING AND SKATING.
- TO AVOID INJURY ENSURE THAT YOUR CHILD IS KEPT AWAY WHEN UNFOLDING AND FOLDING THIS PRODUCT.
- DO NOT LET YOUR CHILD PLAY WITH THIS PRODUCT.
- THIS SEAT UNIT IS NOT SUITABLE FOR CHILDREN UNDER 6 MONTHS.
- ALWAYS USE THE RESTRAINT SYSTEM.
- CHECK THAT THE CAR SEAT UNIT ATTACHMENT DEVICES ARE CORRECTLY ENGAGED BEFORE USE.



NOTICES

- Before using the stroller, it is necessary to read this instruction and keep it for the next time.
- The baby may be endangered if the instructions are not followed.
- Only the original parts and mechanisms or the parts and mechanisms approved by manufacturer may be used in the stroller.
- The air pressure in the wheels cannot exceed 1 bar.
- If the baby stroller is kept in the places with big temperature changes, it may cause condensation inside of the stroller.
- Frame with integrated seat unit is suitable for children in age from 6-36 months (up to 15 kg):
 - The additional car seat unit (including adapters) is suitable for babies in age from 0-6 months.
- The baby car seat cannot replace a cradle or a bed. Should your child need to sleep, s/he has to be placed in suitable cradle or bed. The car seat are suitable up to 13 kg baby weight.
- The stroller is designed to carry only one child.
- Do not use the stroller if parts are damaged or missing.
- Make sure that the child is within the sufficient distance from the stroller when folding it.
- Use brakes when the stroller is not moving and when the child is taken out or put in.
- Make sure that the fastening devices of the car seat are fixed well before using the stroller.
- The biggest load of the shopping bag is 2 kg and the biggest load of the purse is 1 kg.
- Never use the stroller on stairs and/or escalators.

FRAME SYSTEM FUNCTION

PREPARATION FOR USE

1. Put the frame of the baby stroller horizontally on the floor (Fig. 1).
2. Remove the safety present on the side of the frame (Fig. 2).
3. Hold the handle and pull it hard up to fix the frame system (Fig. 3, 4).
4. If you wish to fold the frame, make sure that the front wheels are not blocked. They have to rotate around their own axis. Press the adapter buttons on both sides of the frame. Simultaneously pull the adapters towards yourself (Fig. 5).
5. Holding the handle, carefully push the frame downward until it folds into a horizontal position (Fig. 1).
6. Make sure that protection is attached (Fig. 2) and bend the frame's handle inwards.

ADJUSTING HANDLE HEIGHT

1. Simultaneously press the round buttons on the sides of the handle (Fig. 6).
2. Set the handle height that is most convenient for you (Fig. 6).

MOUNTING/REMOVING THE WHEELS

1. To remove the wheel, slightly press its centre and pull it from the place of mounting at a 90 degree angle (Fig.7).
2. If you wish to mount a wheel, insert the blunt end of the wheel axis wheel-ward and pointy end facing the place of mounting. Carefully press the wheel towards the frame until the wheel is fixed. The wheel and the frame can be removed by pressing the red button near the wheel mounting junction (Fig. 8).

BRAKES

1. The stroller has parking brakes, which block the rear wheels. To stop, press down the brake pedal with your foot. To move, lift the brake pedal up (Fig. 9).

REMOVING/MOUNTING AND BLOCKING THE FRONT WHEELS

1. The frame of the stroller has two front driving wheels that have a 360 degree angle of rotation.
2. If you wish to mount a wheel, insert the blunt end of the wheel axis wheel-ward and pointy end facing the place of mounting. Carefully lift the wheel upward (Fig. 10).
3. To remove the wheel, push down the button above it. The wheel is removed along with the axis (Fig. 11).
4. To block the wheel, turn the plastic wheel below the removal button (Fig. 12).

SHOCK ABSORPTION

1. The frame of the stroller has a shock absorption, ensuring the driving comfort of your child.

CRADLE

MOUNTING/UNMOUNTING THE CRADLE

1. Remove the cradle from the transporting package.
2. Insert the cradle adapters into the holders on the inside of the frame (Fig. 13).
3. The cradle adapters are blocked automatically. Make sure that they are fixed in before use.
4. In order to remove the cradle, press the red/grey buttons on the frame's holders (Fig. 14).
5. You can rock the cradle when it is removed and put on the floor.

CRADLE HOOD AND LEG COVER

1. The cradle has a convenient hood that protects the child against the meteorological phenomena such as wind, sun, snow, and rain.
2. The position of the hood can be adjusted by pressing the button on the bottom of the handle (Fig. 15).
3. There is an integrated panoramic roof with the insect screen on the hood. You will find it if you unzip the zippers present on the top and on the bottom of the hood and remove the hood's cover (Fig. 16).
4. There is an integrated additional hood/eye-shade for protection from sun. You will find it in the front part of the hood if you unclothe the additional hood from inside (Fig. 17).
5. The cradle has a leg cover that is put on the front part of the cradle and fixed on both sides of the hood using press-buttons (Fig. 18).

PROTECTION AGAINST RAIN AND INSECTS

The baby stroller has a unified protection from rain that suits both – seat unit (Fig. 19) and cradle (Fig. 20).

SEAT UNIT

MOUNTING/REMOVING THE SEAT UNIT

1. Insert the seat unit adapters into the holders on the inside of the frame (Fig. 21).
2. The adapters are blocked automatically. Make sure that they are fixed in before use.
3. To remove the seat unit, press the buttons on the frame holders (Fig. 22).

HOOD, LEG REST, AND LEG COVER

1. The seat unit has an ergonomic hood that ensures protection of the child against the meteorological phenomena such as wind, sun, snow, and rain.

2. The position of the hood can be adjusted by simultaneously pressing the buttons on the bottom of the hood handle (Fig. 23).
3. There is a ventilation window on the hood. It may be found by unzipping the zipper along the handle's contour (Fig. 24).
4. The leg rest height may be adjusted by simultaneously pressing the buttons that are located on both sides of the platform, parallel to each other (Fig. 25).
5. The back of the seat unit can be adjusted using the handle on the other side. The back can be fixed into four comfortable positions simply by lifting using your fingers (Fig. 26).
6. The leg cover is pulled on in the front and fastened by clips on both sides (Fig. 27).

PROTECTIVE SPORTS PART HANDLE

1. The handle is fastened by inserting its bolts into the holders present on both sides of the seat unit. If you want to put/take the child out, press one of the buttons under the bolts. Pull the handle slightly towards yourself and open it to the side (Fig. 28).

SAFETY BELTS

1. The seat unit has a 5-point safety belt system.
2. The safety belts have to be fastened once the child is seated in the stroller seat unit. Simply put the levers into the lock and tighten the belts (Fig. 29).
3. To unfasten the belts, press the levers and pull them out of the lock (Fig. 30).

CAR SEAT

1. A car seat can be attached to the stroller frame. Baby car seat can be purchased additionally, to find more, visit www.tutis.lt. Below you will find baby car seat instructions manual.
2. To mount the car seat, Insert the adapters into the holders on the inside of the frame (Fig. 31).
3. The adapters are blocked automatically. Make sure that they are fixed in before use.
4. Fix the car seat holders into the specially mounted adapters.
5. The seat has a specifically designed hood and leg cover, which are fastened to the body of the car seat using press buttons (Fig. 32).
6. The seat has a cotton cushion and a 3-point safety belt system (Fig. 33).
7. The car seat handle is inseparable from the seat body. It can be adjusted by simultaneously pressing the side buttons. When the buttons are pressed, carefully push the handle in the direction you need (Fig. 34).
8. A car seat is removed from the holders by pushing the buttons inside the body of the seat. (Fig. 35).
9. Some car seat models can be fastened in the car ISOFIX base. Consult the seller regarding these capabilities (Fig. 36).

WARRANTY CONDITIONS

1. TUTUTIS JSC gives the warranty for this product. The warranty period is specified in the purchase document of the baby stroller that is executed and approved by the stroller's seller.
2. All the claims for the product's defects shall be brought to the company, where you have purchased the product. No claims for the scratches, which appear after the purchase, shall be accepted.
3. The warranty repairs shall be performed by the manufacturer or the service company indicated by the seller.
4. The physical defects of the baby stroller noticed during the warranty period shall be removed free of charge in 21 days at the most after the baby stroller has been brought to the company (through mediation of the seller).
5. The warranty period is extended accordingly to the duration of repair.
6. The warranty provider shall determine the type of repair works.
7. The product, regarding which the claim has been brought, has to be delivered clean.
8. If the warranty document is lost, no duplicates will be issued.
9. The warranty issued for the sold consumables does not negate or suspend the purchaser's rights related to non-compliance of the item with the contract's conditions.
10. In order to have the customers completely satisfied with their baby strollers, TUTUTIS JSC reserves the right to make changes in the stroller's design without notification of the purchasers.

WARRANTY IS NOT APPLICABLE

1. When the product shows wear naturally during usage.
2. For damages caused by improper usage or improper maintenance.
3. According to the new EU standards, the baby stroller is considered to be the above-ground vehicle, therefore it cannot be returned.

4. For the repair works performed by unauthorized persons.
5. For the wheels of the baby stroller.
6. For the damages and tears caused by the purchaser.
7. For discolouration of fabrics because of long-term exposure to sun.

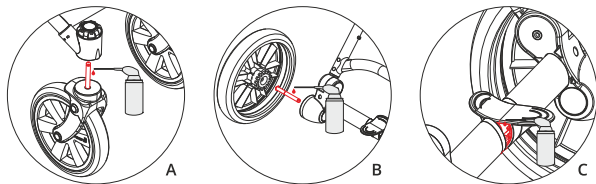
GENERAL MAINTENANCE

- Prolonged exposure to sunlight can change the colour of fabrics and materials of the baby stroller. In order to keep the materials in original colour as long as possible, never leave the baby stroller in direct sunlight for a longer period of time.
- Always use protection from rain when it is raining or snowing.
- In order to protect the baby stroller from condensation and mould, never keep it in the cold and/or humid place.
- If the frame is wet, dry it out. Make sure that the baby stroller is completely dry before leaving it in the storage place. Dry it out naturally, away from open flame/ heat sources.
- Prevent penetration of salty water into the baby stroller as it may cause rust. In such a case the frame has to be washed and dried out.
- Be careful while transporting and storing the baby stroller as its surface is sensitive.
- No claims for the scratches, which appear after the purchase, shall be accepted.
- Do not place the baby stroller on light flooring (especially PVC or linoleum) for longer periods of time because the rubber tires may leave black stripes.

PERIODIC INSPECTION

- Clean and dry the frame out regularly. Lubricate all its connections. If the baby stroller is used in winter, clean it at least once in a week because insufficient cleaning may result in rust.

- It is necessary to control the wear level of the wheels and to clean them from dust and sand.
- **It is recommended to lubricate the wheel axes, hubs and bearings every 3 months (clean them before lubrication). The axes may be lubricated with motor oils (A, B, C).**



MAINTENANCE OF FABRICS

- The product has to be cleaned periodically.
- There is no need to remove upholstery of the baby stroller.
- The internal liners of the baby stroller may be hand washed at maximum temperature of 30°C. Use gentle detergents. Rinse thoroughly. Dry naturally.
- Washing of external fabrics of the baby stroller is not recommended.
- Clean the baby stroller's parts made from artificial leather with a damp cloth using gentle detergent. Dry at room temperature.
- Ironing: always put 100% cotton between the fabric and the iron to protect the fabric's surface. Only warm iron may be used.

CHECK REGULARLY

- Whether all the retainers and folding mechanisms of the baby stroller are working properly.
- Whether all the rivets, screws and nuts are tightened well and unbroken.
- Whether the plastic parts are not broken or cracked.
- Whether the wheel nuts are in good condition.
- Whether all the adhesive fasteners and clips are fastened well.
- Whether the brakes are functioning.